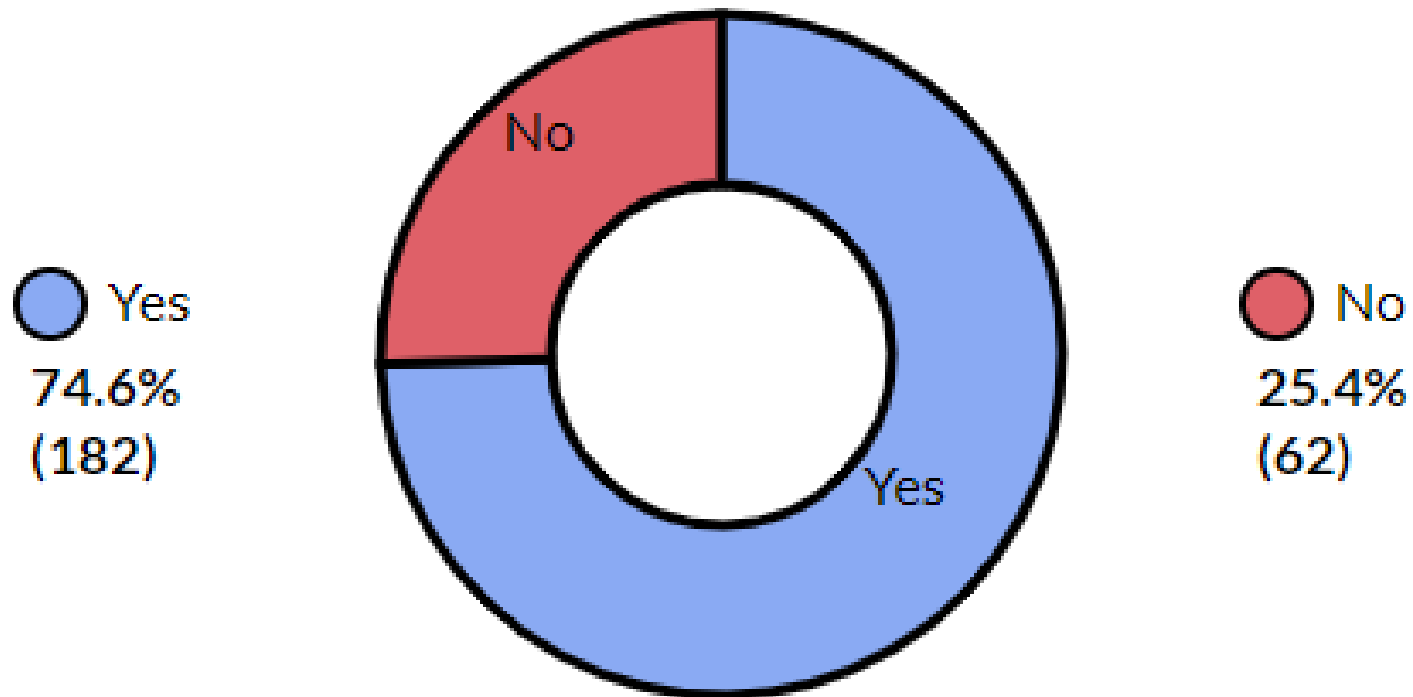
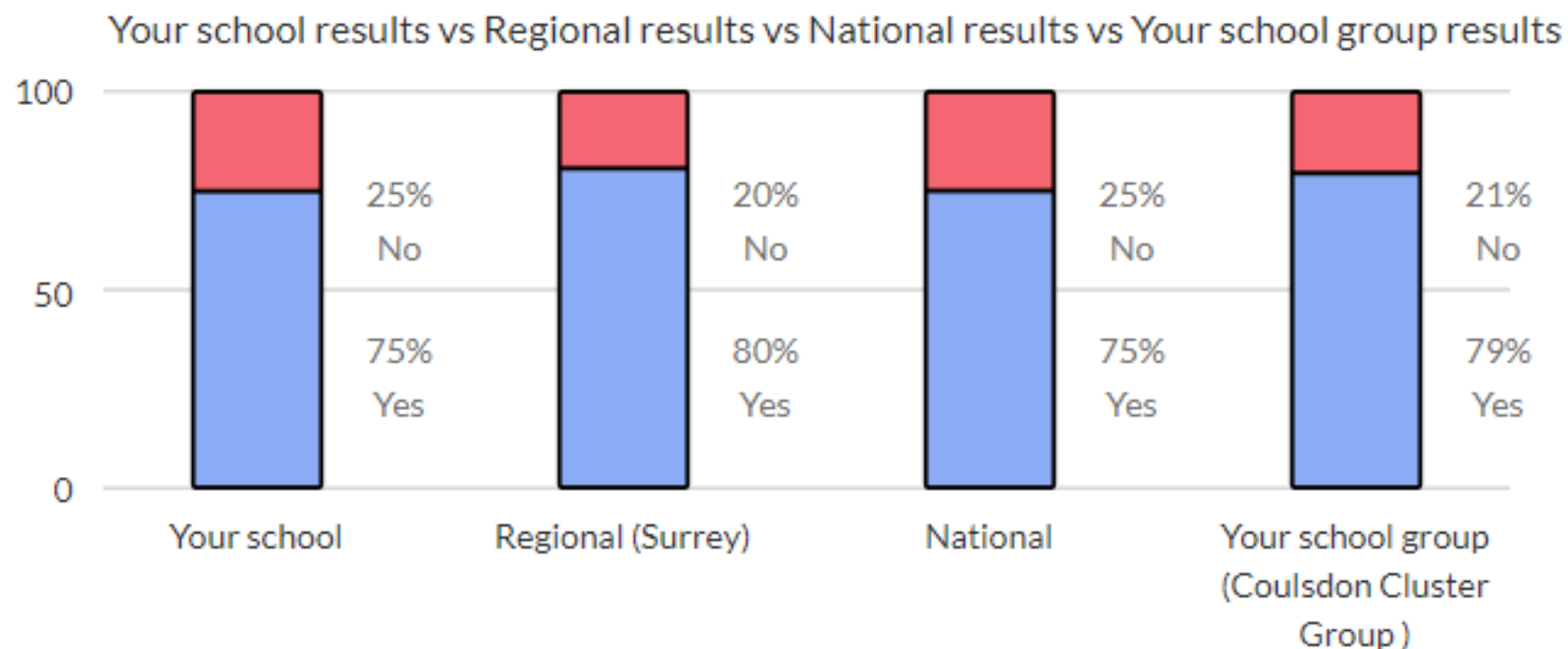


Primary KS1

Results in your school



How your results compare...



Are there enough **role models** on TV?



Starter: Guess the characters!

Ready?
Now click!



Rastamouse



The Octonauts

Can you guess who these famous TV characters are even though most of the picture is missing? Click for answers!

Charlie & Lola



Horrid Henry





Who is your favourite?



Lots of people have favourite TV characters because they **set a good example** with how they behave and inspire others to do the same. This is called a **role model**.



Do you have a favourite TV or film character? Why did you pick that person? Use the word bank below to help!



Caring

Understanding

Happy

Interesting

Strong

Funny

Clever

Talented

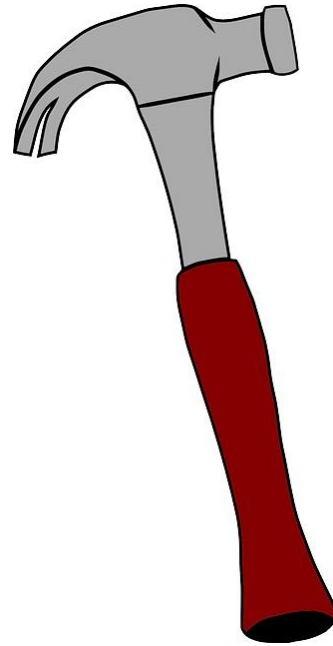
Brave

What is a role model?

A role model is somebody you **admire** and who **inspires you**.

Lots of people say that **Bob the Builder** is a great role model for children. He is **honest**, **hardworking** and can always fix things!

For some people it's important that their role model looks like them. Is this the same for you? Or does it not matter?



What is a role model?

0:00 -
1:30



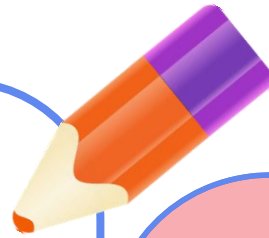
Click the image to find out about the people who inspired him.
How many role models did he have, and what jobs did they all do?

This is Neil deGrasse Tyson, a famous space scientist!



A role model doesn't need to be somebody that looks like you. It can be somebody who has a **job** you'd love to have, or a **skill** you'd love to learn.

Is there a character like you?



Imagine you're the main character in a new cartoon!
How would you draw yourself? What are the best bits about you that other children would admire?

Funny

Clever

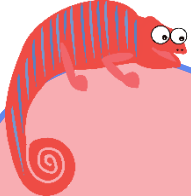
Strong

Understanding

Interesting

Brave

Is there a character like you?



How does it compare with your friends? Do you think there is anybody like your character on TV at the moment?

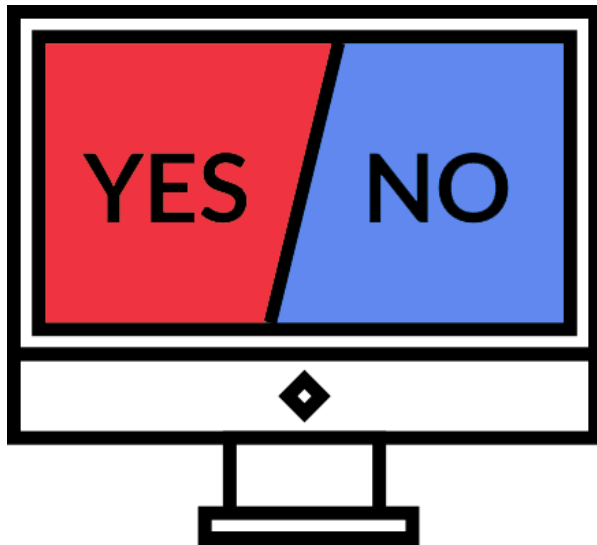


You could also think about:

- Their personality
- If they help others
- What they look like

Are there enough **role models** on TV?

Yes



Yes

- I think the characters I see on TV remind me of all the different people I see in real life.
- As long as there are characters that do the right thing, they can be seen as role models.
- For me, it doesn't matter what a role model looks like. A lot of people that look different from me are inspiring to me!

Are there enough **role models** on TV?

No



No

- I don't recognise a character that looks like me when I watch TV.
- I think that a lot of characters look the same and say the same sort of things.
- I wish there was somebody on TV that reminded me of the kind of person I'd like to be one day.

